



Grass growth prediction in Ireland to improve grazing management practice

Ruelle E., O'Leary M., Hennessy D., Bonnard L., Delaby L. and O'Donovan M.

MoSt



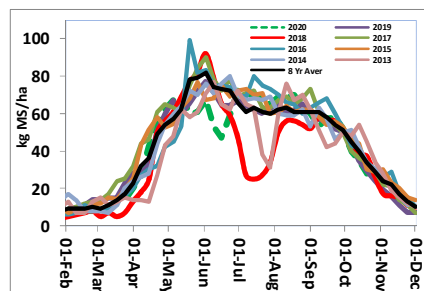
Context: Ireland the green country

- 80 % of the agriculture area is on pasture, hay and grass silage
- Extended grazing season: February to November
- Lots of program to increase grass utilisation

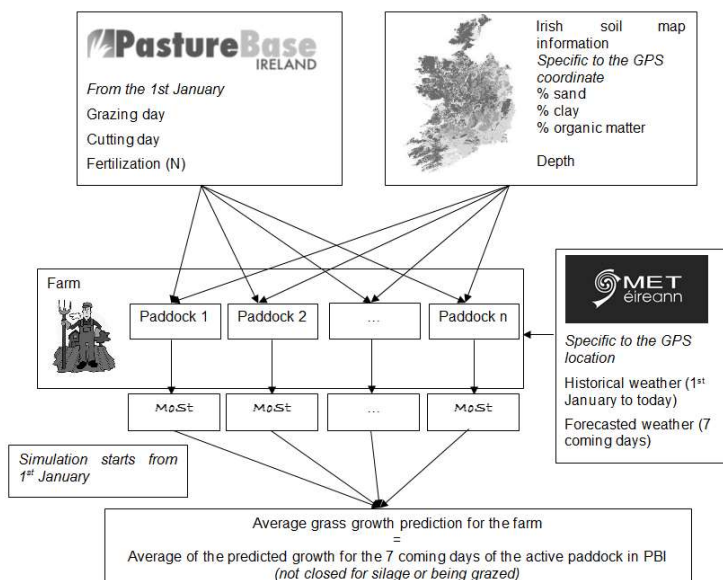


Why grass growth predictions?

- Grass growth is highly variable
- Decision support tool look at the past/present not the future
- Really needed at time of change
 - Started in 2018

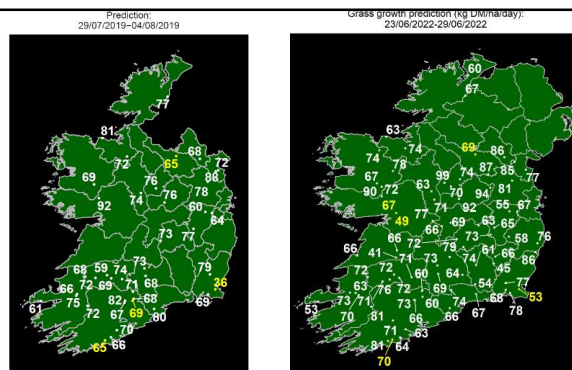


How does it work?

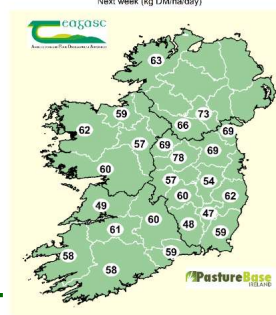


Evolution

- 2018 start with 3 farms
- 2019 Real start with 45 farms
- Currently 78 Farms
 - Going to farmers whatsapp
 - Grass 10 newsletter/Farmer journal
 - Met eireann/government

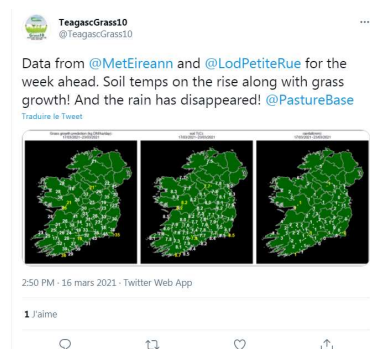


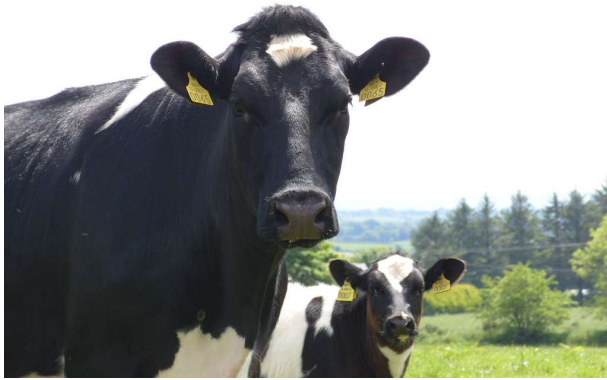
NATIONAL TV!!!



Conclusions

- With the right combination of tools live grass growth prediction is possible
- Farmer are using it to adapte their management
- More useful in a time of change
- There is engagement and proper understanding of the prediction





Thank you for your
attention

